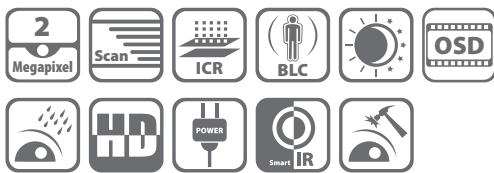


DS-2CC51D5S-AVPIR3

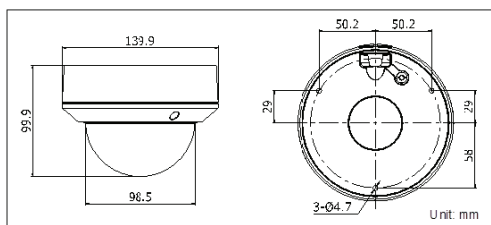
HD1080p Vandal Proof IR Dome Camera



Key features

- 2 MP CMOS Image Sensor
- Full HD1080p Video Output
- True Day/Night
- Privacy Masking, Eclipse
- OSD Menu
- Up to 40m IR Distance
- IP66 Weatherproof and Vandal Proof

Dimensions



Accessories



Indoor/outdoor wall mount
DS-1273ZJ-135



In-ceiling mount
DS-1227ZJ

Available models

DS-2CC51D5S-AVPIR3

DS-2CC51D5S-AVPIR3	
Camera	
Image Sensor	1/3" Progressive Scan CMOS
Signal System	PAL/NTSC
Effective Pixels	1920(H)*1080(V)
Min. Illumination	0.01 Lux @(F1.2,AGC ON), 0 Lux with IR
Shutter Time	1/25 s to 1/50,000 s
Lens	2.8-12mm @ F1.4
	Angle of view: 80° - 27.2°
Lens Mount	Φ14
Angle Adjustment	Pan: 0 - 360°, Tilt: 0 - 90°, Rotation: 0 - 360°
Day & Night	ICR
Synchronization	Internal synchronization
Video Frame Rate	1080p@25fps/1080p@30fps
HD Video Output	SMPT292M (HD-SDI)
CVBS Output	1Vp-p Composite Output(75Ω/BNC)
S/N Ratio	More than 52dB
Menu	
Camera ID	On/off (15 characters, position programmable)
AGC	Support
D/N Mode	Color/BW/EXT
White Balance	ATW, AWC-SET, Indoor, Outdoor, Manual
Privacy Mask	On/Off, maximum 8 zones
Motion Detection	On/Off, maximum 4 zones
BLC	Support
Anti-flicker	On/off
Language	English, Japanese, CHN1, CHN2, Korean, German, French, Italian, Spanish, Polish, Russian, Portuguese, Dutch, Turkish, Hebrew and Arabic
Functions	Eclipse, Digital noise reduction, Digital zoom(62x), Slow shutter, Mirror, Defog, Defect pixel correction, SMART D-ZOOM, Smart Focus
General	
Working Temperature/Humidity	-10 °C - 60 °C (14 °F - 140 °F) Humidity 90% or less (non-condensing)
Power Supply	12V DC±10%, 24V AC±10%
Power Consumption	Max. 7W
Weather Proof Ratings	IP66
IR Range	40 meters
Dimension	Φ139.9 × 99.9 mm (Φ 5.51" × 3.93")
Weight	800 g (1.76 lb)